

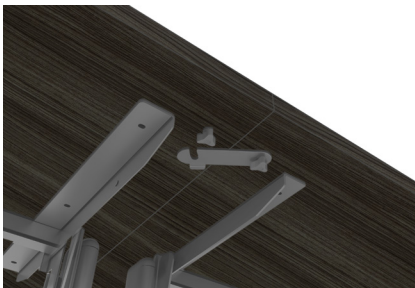
LEVELS

Training Tables with Tucana Bases



FEATURES:

- Tops are available in all standard **HDL** Levels Series finishes
- Metal on metal insert nut connection between top & base
- Durable, 1" commercial grade laminate construction with matching 2mm edge band
- Two sizes - 24" deep & 30" deep training tables
- 30" deep tables include center grommet
- Metal bases feature a perforated, metal modesty panel with built-in cable management and heavy-duty locking casters
- Attractive metallic silver base finish
- Maximum weight capacity - 220 lbs (top not included)



CONNECT TABLES



LEVER FLIP TOP



NESTING



OPTIONAL CPU HOLDER



AVAILABLE MODELS

24" FLIP TOP TRAINING TABLES



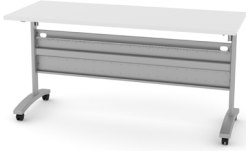
LEV-2436TBL-TU24
35.5w x 23.75d x 29h



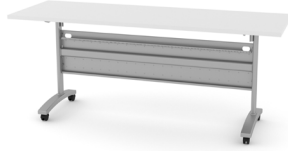
LEV-2442TBL-TU54
41.5w x 23.75d x 29h



LEV-2448TBL-TU54
47.25w x 23.75d x 29h



LEV-2460TBL-TU72
59.25w x 23.75d x 29h



LEV-2472TBL-TU72
71w x 23.75d x 29h

30" FLIP TOP TRAINING TABLES



LEV-3060TBL-TU72
59.25w x 29.5d x 29h



LEV-3072TBL-TU72
71w x 29.5d x 29h

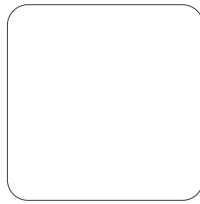
AVAILABLE FINISHES



Black Walnut
BW



Grey Dusk
GD



Pure White
PW



Winter Wood
WW

DEFAULT GROMMETS

Grey Dusk & Black Walnut - Black grommets
Winter Wood & Pure White - Grey Grommets



HEARTWOOD DISTRIBUTORS LTD.
251 ADAMS RD, KELOWNA, BC
T 1 800 567 3060 F 250 765 1213
www.heartwooddl.com

Contact your local dealer:

LIMITED LIFETIME WARRANTY



HDL is pleased to offer a limited lifetime warranty on all laminate products. For specific series warranty details, please refer to the downloadable Limited Lifetime Warranty document online.

THE IN-STOCK ADVANTAGE



HDL is committed to maintaining stock at all times. Every effort will be made to ensure these products are available.

Eco STORY



HDL is committed to supplying office furniture products in an environmentally responsible manner. We are proud to partner with like-minded corporate citizens who align environmental stewardship with their company's core values and goals. Innovations is produced with CARB certified laminate